

RMA • ENGINEERING
 Consulting Engineers
 182 W. Main, Claremore, Oklahoma
 (918) 251-1334 - Phone
 (918) 251-0425 - Fax
 www.rmaengineering.com

REV	DATE	DESCRIPTION	APPR
△	5/23/08	REVISION	
△	4/9/08	INSTALL 2x2 ACOUSTICAL CEILING AT C129, C123, C136	

A NEW SENIOR LIVING FACILITY FOR:
STONE GATE SENIOR LIVING

TULSA OKLAHOMA

BUNDY, YOUNG, SIMS & POTTER, INC.
 ARCHITECTS/PLANNERS/INTERIOR DESIGN

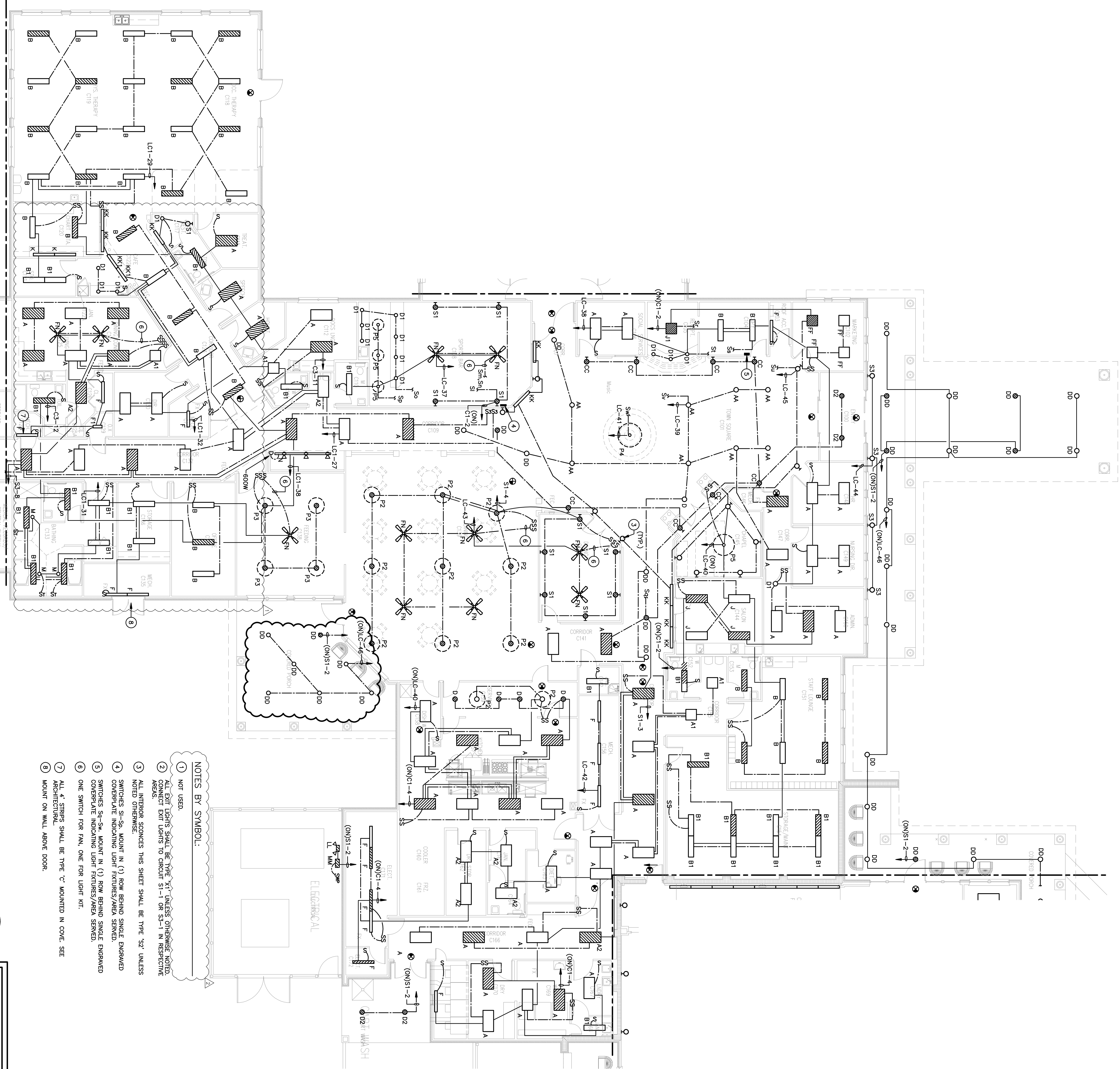
1005 9th, Suite 200
 Wichita Falls, TX 76701
 Tel: (940) 761-2404
 Fax: (940) 761-2119
 E-mail: bysp@ybsp.com

Dick Bundy, AIA Tom Young, AIA (1949-1993) Rick Sims, AIA David Potter, AIA



DRAWN BY: MBR/SJM
 CHECKED BY: LLD/DMG
 DATE: 02/13/08
 JOB NO.: 07008

OF _____ SHEETS
E102
 FIRST FLOOR - 'C'
 LIGHTING



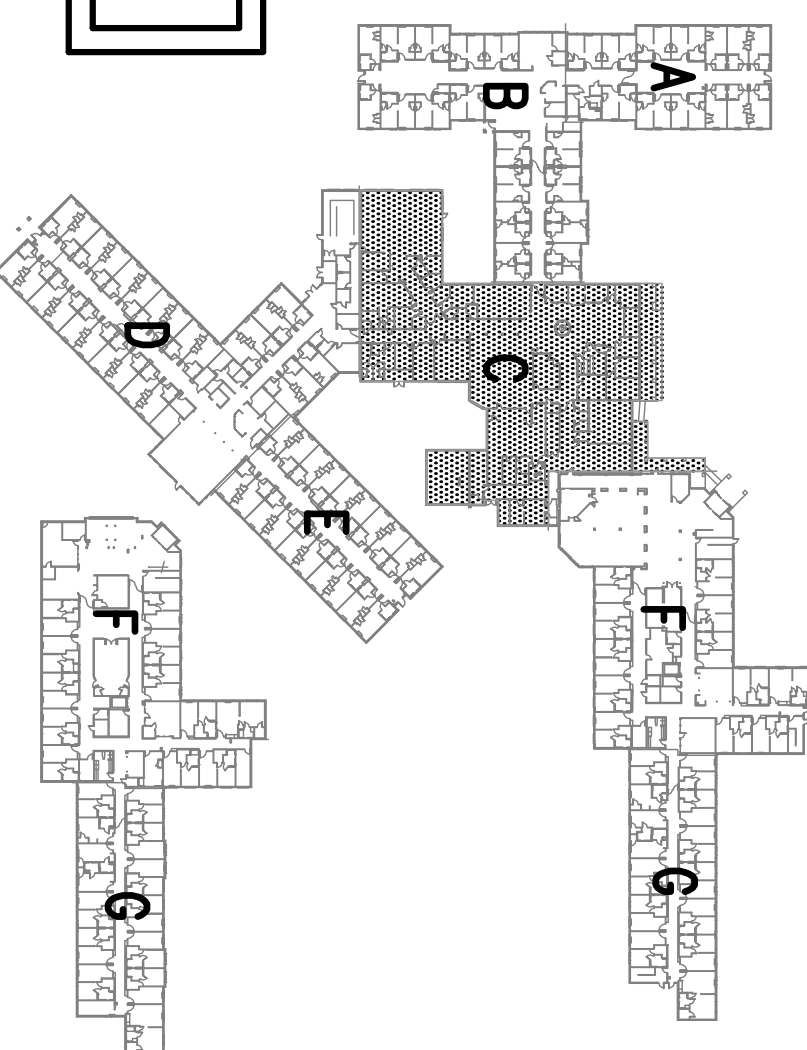
- NOTES BY SYMBOL:**
- 1 NOT USED.
 - 2 ALL EXIT LIGHTS SHALL BE TYPE 'XT' UNLESS OTHERWISE NOTED. CONNECT EXIT LIGHTS TO CIRCUIT S1-1 OR S3-1 IN RESPECTIVE AREAS.
 - 3 ALL INTERIOR SCENES THIS SHEET SHALL BE TYPE 'S7' UNLESS NOTED OTHERWISE.
 - 4 SWITCHES S1-S3- SP. MOUNT IN (1) ROW BEHIND SINGLE ENGAWED COVERPLATE INDICATING LIGHT FIXTURES/AREA SERVED.
 - 5 SWITCHES S4-S6- SP. MOUNT IN (1) ROW BEHIND SINGLE ENGAWED COVERPLATE INDICATING LIGHT FIXTURES/AREA SERVED.
 - 6 ONE SWITCH FOR FAN, ONE FOR LIGHT KIT.
 - 7 ALL 4" STRIPS SHALL BE TYPE 'C' MOUNTED IN CODE, SEE ARCHITECTURAL.
 - 8 MOUNT ON WALL ABOVE DOOR.

1 FIRST FLOOR PLAN - 'C' - LIGHTING

SCALE: 1/8"=1'-0"



FOR CONSTRUCTION



CONSULT: 2007 MARRIOTT, YOUNG, SIMS & POTTER, INC.