



Drop-In Refrigerated Cold Wells

PRODUCT:

QUANTITY: 1 ITEM #: 71

Model: CW-1 CW-2 CW-3 CW-4 CW-5

Quantity 3 Ιταλ 7λ

Designed Smart

- The Countertop Cold Well is portable and provides an economic solution to the cost of in-counter refrigeration.
- Available in 4/3 size.
- Uses R-134a refrigerant.
- Can hold cold food at 34°F to 40°F for extended periods.
- Interior temperature is factory set, but can be field adjusted depending on unit's application.
- Unit has 5/8" recessed legs.
- Compression size 1/6 hp with an optional 5-year warranty available.



DROP-IN COLD WELL

Built Solid

- Stainless steel construction with fully insulated walls.
- Supplied with 6 ft. cord and NEMA 5-15P plug.

Reliability backed by APW Wyott's Warranty

- APW Wyott Refrigerated Topping Rails are backed by a 1-year parts and labor warranty, including on-site service calls within 50 miles of authorized service technicians.
- Certified by the following agencies:



APW Wyott Design Features

- Hinged cover
- Holds standard steamable pans
- Energy saving
- Field adjustable temperature

Options

- COMP-5 5-year compressor warranty

See reverse side for product specifications.



APW Wyott Foodservice Equipment Company · 729 Third Ave., Dallas, TX 75226
(800) 527-2100 · (214) 421-7366 · Fax (214) 565-0976 · www.apwwyott.com · info@apwwyott.com

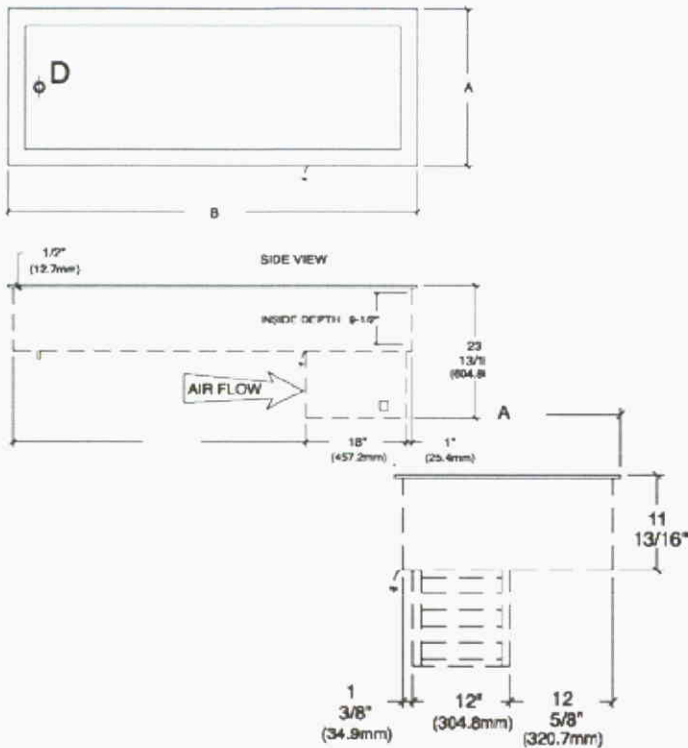
Rev. 5/06/2008

PRODUCT:

QUANTITY:

ITEM #:

Model: CW-1 CW-2 CW-3 CW-4 CW-5



PRODUCT SPECIFICATIONS

Construction:

Stainless steel construction with fully insulated walls.
5/8" legs included.

Shipping:

CW-1: 121 lbs
 CW-2: 179 lbs
 CW-3: 203 lbs
 CW-4: 233 lbs
 CW-5: 327 lbs

F.O.B. Cheyenne, WY

SPECIFICATIONS

ELECTRICAL

| MODEL | VOLTS | Hz | PHASE | AMPS | COMPRESSOR | CHARGE |
|-------|-------|-------|-------|------|------------|------------------|
| CW-1 | 120 | 60 | 1 | 4 | 1/5 HP | 9.0 oz. - R134A |
| CW-1 | 230 | 50/60 | 1 | 2 | 1/5 HP | 9.0 oz. - R134A |
| CW-2 | 120 | 60 | 1 | 4 | 1/4 HP | 10.0 oz. - R134A |
| CW-2 | 230 | 50/60 | 1 | 2 | 1/4 HP | 10.0 oz. - R134A |
| CW-3 | 120 | 60 | 1 | 4 | 1/4 HP | 11.0 oz. - R134A |
| CW-3 | 230 | 50/60 | 1 | 2 | 1/4 HP | 11.0 oz. - R134A |
| CW-4 | 120 | 60 | 1 | 4 | 1/4 HP | 12.0 oz. - R134A |
| CW-4 | 230 | 50/60 | 1 | 2 | 1/4 HP | 12.0 oz. - R134A |
| CW-5 | 120 | 60 | 1 | 5.5 | 1/3 HP | 13.0 oz. - R134A |
| CW-5 | 230 | 50/60 | 1 | 2.8 | 1/3 HP | 13.0 oz. - R134A |

DIMENSIONS

| MODEL | DIMENSIONS INCHES (mm) | RECOMMENDED CUT-OUT |
|-------|---|--------------------------------------|
| CW-1 | 19-1/2" (495.3) x 28" (711.2) x 23-13/16" (604.8) | 18" (457.2) x 26-1/2" (673.1) |
| CW-2 | 28" (711.2) x 32-13/16" (833.4) x 23-13/16" (604.8) | 26-1/2" (673.1) x 31-5/16" (795.3) |
| CW-3 | 28" (711.2) x 46-1/8" (1171.6) x 23-13/16" (604.8) | 26-1/2" (673.1) x 44-5/8" (1133.5) |
| CW-4 | 28" (711.2) x 59-7/16" (1509) x 23-13/16" (604.8) | 26-1/2" (673.1) x 57-15/16" (1471.6) |
| CW-5 | 28" (711.2) x 72-3/4" (1847.9) x 23-13/16" (604.8) | 26-1/2" (673.1) x 71-1/4" (1809.8) |

*APW Wyott reserves the right to modify specifications or discontinue models without incurring obligation.